

Lead Detection Test Kit - TK08™

for various materials, such as paint layers, electronics and metals



Lead (Pb) can be harmful to human health and the environment. With this kit you can easily test the presence of lead in paint layers, coatings, metals, soldering, water pipes and other materials. Using the kit will produce quick, safe and reliable results, that can help you to make sure your materials are safe. The test kit contains 50 lead tests. The test kit is supplied with a manual and safety data sheets.



Yellow = no lead



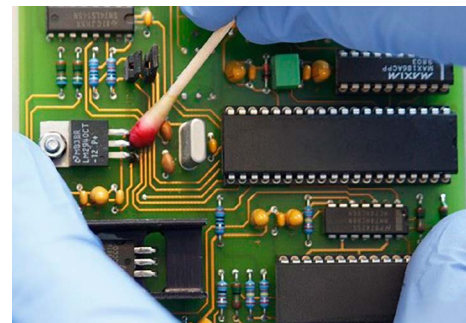
Red = lead

Testing for the presence of lead

To test for the presence of lead, rub the cotton swab moistened with test liquid over your object. If the swab remains yellow, then no lead is present. If the swab turns red, it indicates the presence of lead in the tested material.

The advantages of the TK08 Lead Detection Test Kit

- ✓ Test sample included
- ✓ Certificate of Conformity (CoC) provided
- ✓ Safety data sheets and clear instructions (including photos) provided
- ✓ No cross-reactions with other materials such as cadmium, copper, iron, and zinc
- ✓ Specification available with detection limit indicated
- ✓ Delivered complete, ready to use
- ✓ Detects all types of lead-containing materials and paint layers
- ✓ Works on both dry and moistened surfaces (e.g., with condensation)
- ✓ Easy-to-read results under all conditions
- ✓ Long shelf life



T: +31 (0)85 30 36 411
E: info@matinspired.com
I: www.matinspired.com

MATinspired B.V.
Ericssonstraat 2
5121 ML Rijen
The Netherlands